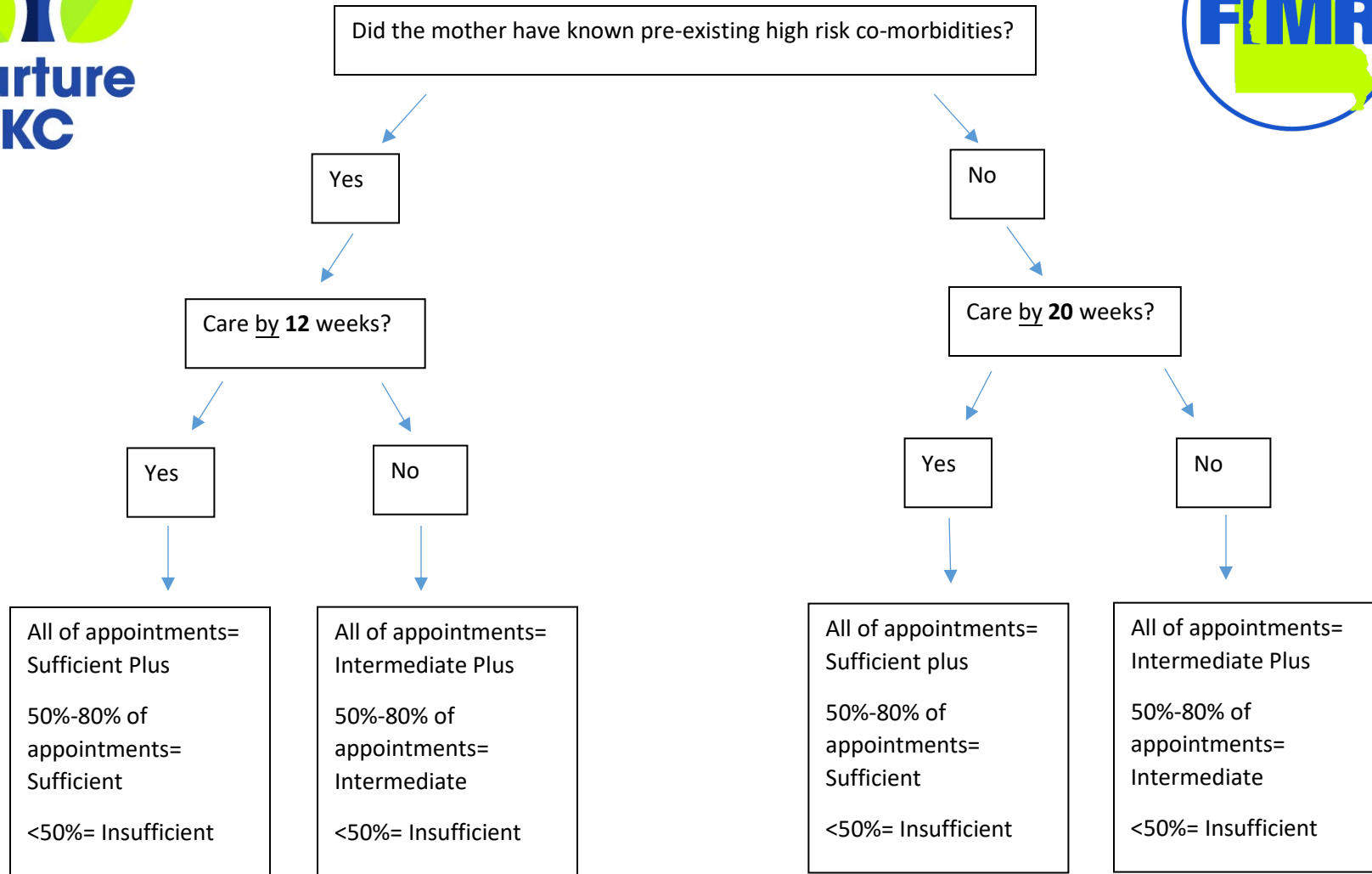




# Prenatal Care Sufficiency Algorithm



While this algorithm is a starting point to measure sufficient prenatal care, other factors including: systemic failures, institutional racism, access to appropriate care, and birthing person’s willingness/ability to seek care should be taken into account.

This algorithm was created from the March of Dimes’ “Adequate Prenatal Care” definitions and modified by the KC FIMR CRT.